

FORMER BANK BUILDING OFFICE LEASE

High Traffic Location at 6850 W Fairview Avenue - Boise, Idaho



AVAILABLE

Up to 7,894 SF of 10,348 SF building total
(Main and Lower Levels)

LEASE RATE / TYPE - REDUCED!!

3,057 SF Main Level Office \$14.00 PSF / NNN*

4,837 SF Lower Level Office/Storage \$7.00 PSF / NNN*

(Lower level demisable to minimum of 2,000 SF)

*Triple nets estimated at \$2.65/SF

Now \$7 PSF for Lower Level!

COMMENTS

- Former bank branch at intersection of W Fairview Avenue and N Allumbaugh Street
- Located in one of Boise's highest traffic corridors
- Ample Parking
- Open lobby with vaulted high ceilings & natural light
- Customer area with fireplace
- Kitchen and break area
- Large open basement, fully sprinklered, with 2nd vault/office in view



**ARTHUR BERRY
& COMPANY**

250 W Bobwhite Court, Suite 230, Boise, Idaho 83706 208-336-8000 www.arthurberry.com

David Berry
208-871-1502
david@arthurberry.com

File 5075 / Rev20221003



FORMER BANK BUILDING OFFICE LEASE

High Traffic Location at 6850 W Fairview Avenue - Boise, Idaho

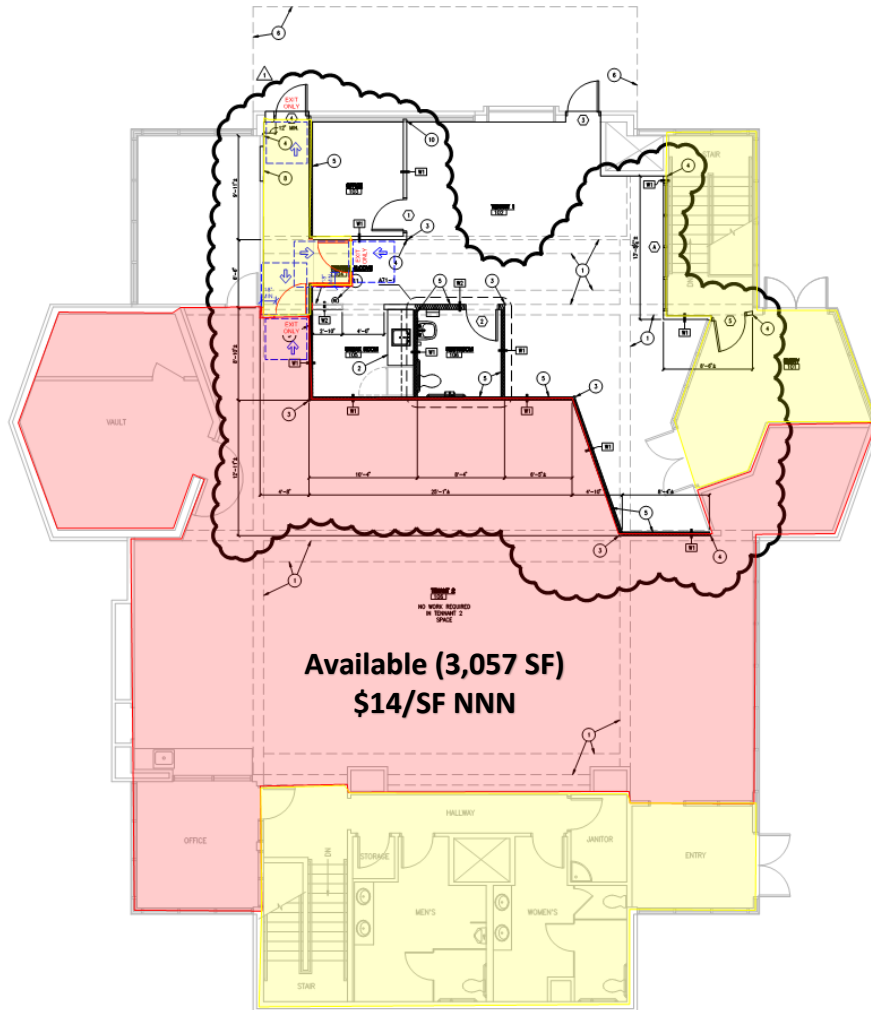


FORMER BANK BUILDING OFFICE LEASE

High Traffic Location at 6850 W Fairview Avenue - Boise, Idaho

FLOOR PLANS

Main Level



Lower Level

