

# EAGLE ROAD PROFESSIONAL CENTER

3090 GENTRY WAY | MERIDIAN, IDAHO

1,879 RSF PROFESSIONAL OFFICE OR MEDICAL SPACE



Building owned and managed by  
**HEALTHCARE REALTY**

**ARTHUR BERRY  
& COMPANY**

250 W Bobwhite Ct Suite 230  
Boise, Idaho 83706

**208-336-8000**

[www.arthurberry.com](http://www.arthurberry.com)

# SUITE 150

3090 GENTRY WAY | MERIDIAN, IDAHO

**AVAILABLE:** 1,879 RSF Professional Office or Medical Space

**LEASE RATE:** Contact Agent

**NNN CHARGES:** Contact Agent (NNN Expense includes Power)

**TI ALLOWANCE:** Negotiable

## APPOINTMENT REQUIRED

Please contact Arthur Berry & Company for showing instructions.

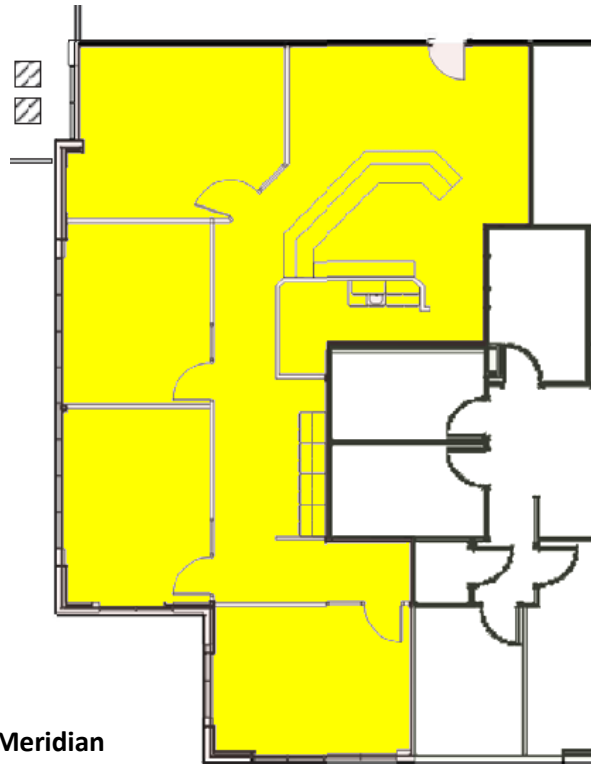
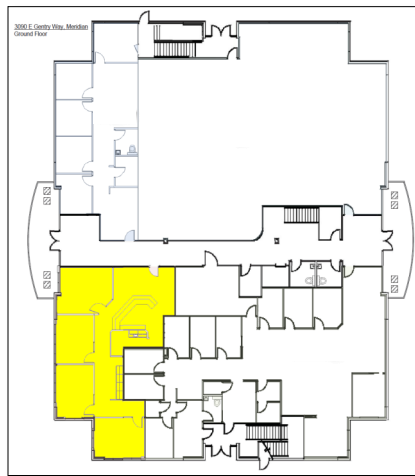
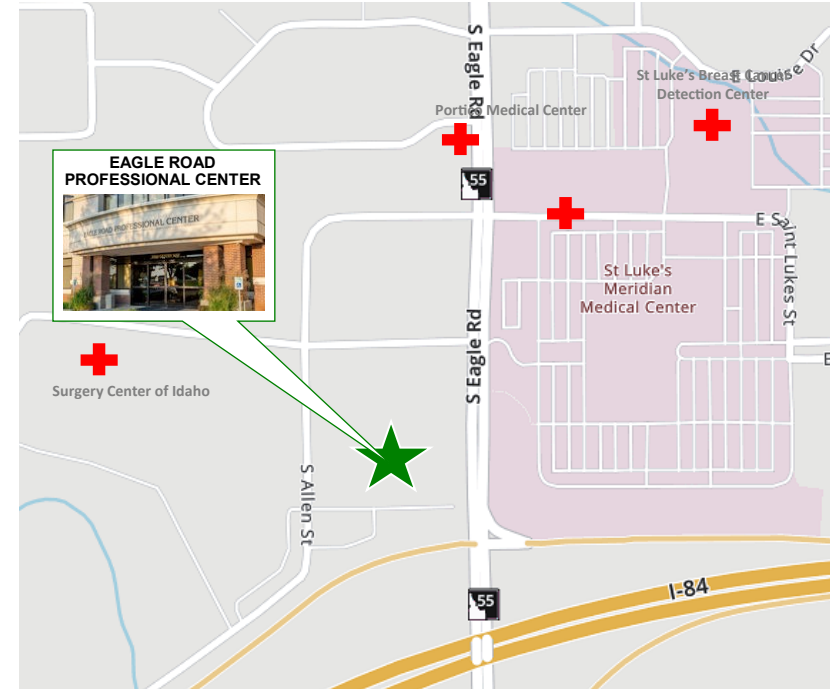
## ARTHUR BERRY & COMPANY



250 W Bobwhite Ct Suite 230  
Boise, Idaho 83706

208-336-8000

[www.arthurberry.com](http://www.arthurberry.com)



Ground Floor - 3090 Gentry Way, Meridian

- Class A Building across from St. Luke's Meridian
- Professionally Managed
- High Standard of Maintenance
- Plenty of On-site Parking
- Easy Freeway Access
- Generous Tenant Improvement Allowance for Medical Office Tenant

Building owned and managed by  
**HEALTHCARE REALTY**





EAGLE ROAD PROFESSIONAL CENTER



3080

3090

## PARKING AREA



## ARTHUR BERRY & COMPANY



250 W Bobwhite Ct Suite 230  
Boise, Idaho 83706

208-336-8000

[www.arthurberry.com](http://www.arthurberry.com)



Building owned and managed by  
HEALTHCARE REALTY