

CURTIS BUSINESS PLAZA

1070 N CURTIS ROAD | BOISE, IDAHO

Full Co-Broker
Fee paid upon
lease execution if
signed in 2023



SUITE 210

1,935 NRSF MEDICAL/PROFESSIONAL OFFICE SPACE AVAILABLE

SUITES 250-270

6,270 NRSF MEDICAL/PROFESSIONAL OFFICE SPACE AVAILABLE*

Across from St. Alphonsus Regional Medical Center!

**Can be demised to suit*

Building owned and managed by
HEALTHCARE REALTY

**ARTHUR BERRY
& COMPANY**

250 W Bobwhite Ct Suite 230
Boise, Idaho 83706

208-336-8000

www.arthurberry.com



SUITES 210, 250-270

1070 N CURTIS RD | BOISE, IDAHO

AVAILABLE: 1,935 NRSF Medical/Professional Office (Suite 210)
6,270 NRSF Medical/Professional Office (Suites 250-270)*

LEASE RATE: Contact Agent

NNN CHARGES: Contact Agent

TI ALLOWANCE: Negotiable

*Can be demised to suit

APPOINTMENT REQUIRED

Contact Arthur Berry & Company for showing instructions

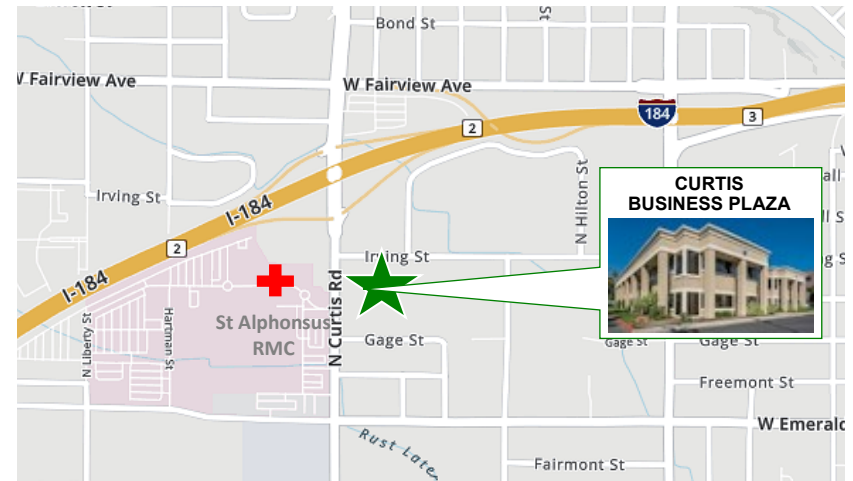
ARTHUR BERRY & COMPANY



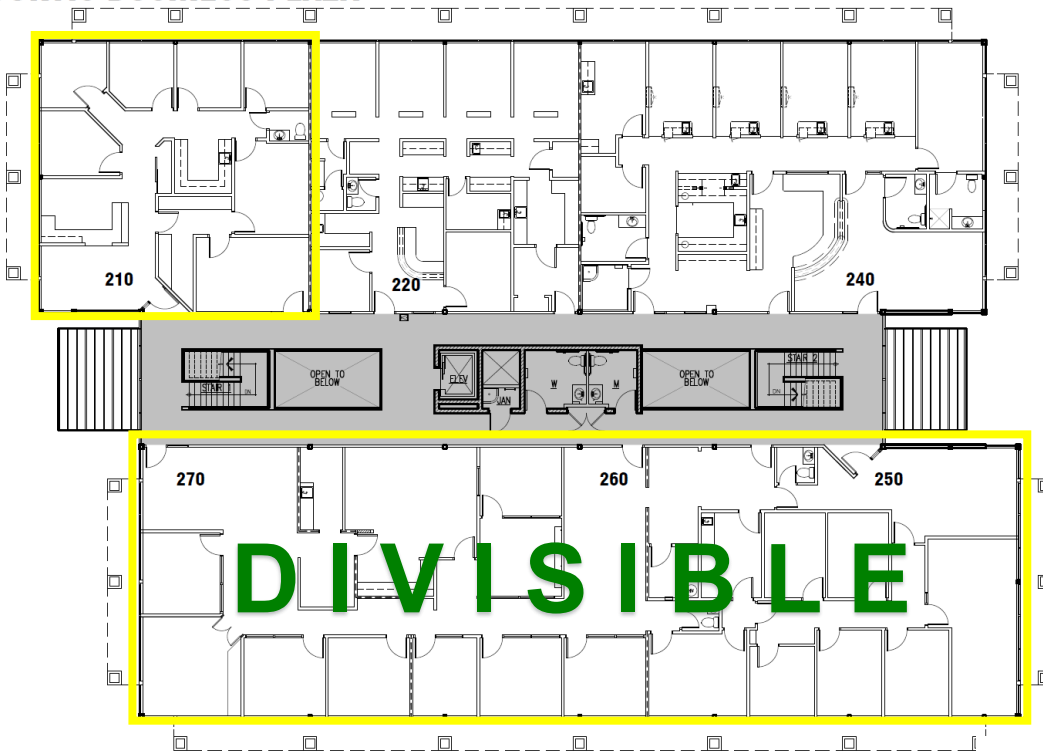
250 W Bobwhite Ct Suite 230
Boise, Idaho 83706

208-336-8000

www.arthurberry.com



CURTIS BUSINESS PLAZA



- Suite 210 Corner Office with Lots of Windows
- Suites 250-270 Flexible Size (divisible into 3 spaces)
- Plenty of On-site Parking
- Easy Freeway Access
- Generous Tenant Improvement Allowance for Medical Office Tenant

Broker Incentive Available!

SECOND FLOOR PLAN

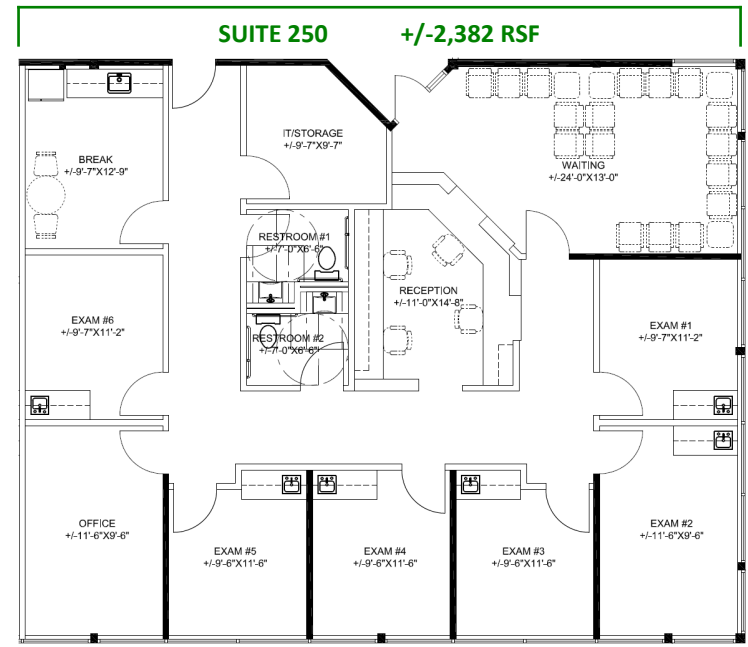
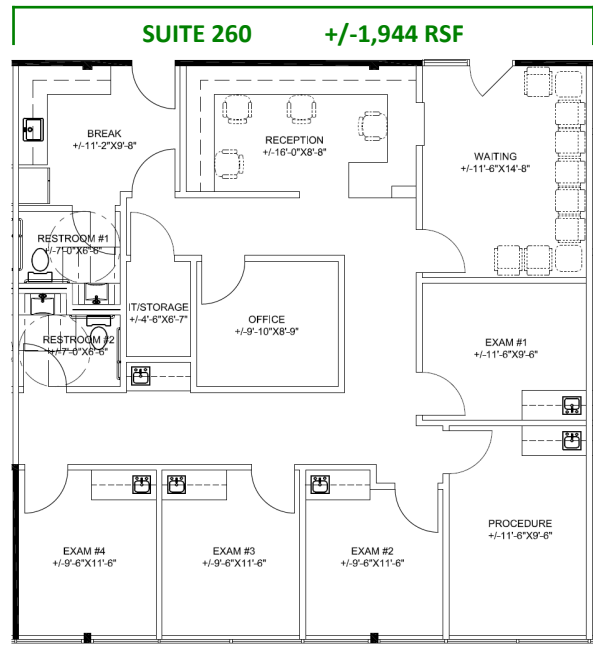
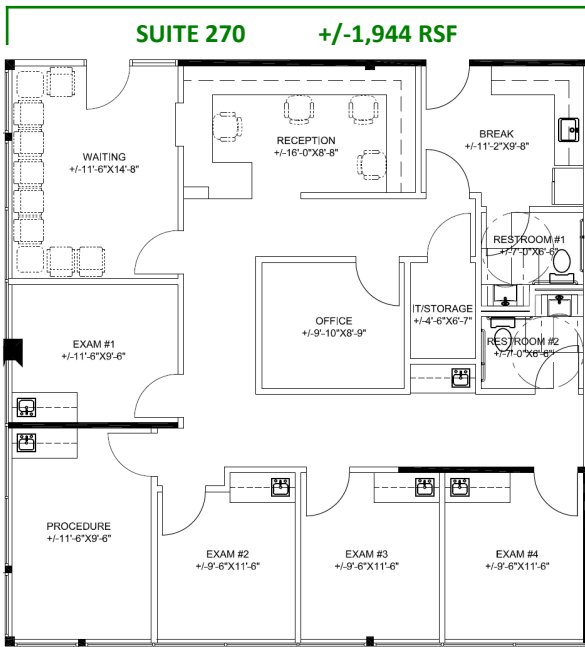
SCALE: 1/16" = 1'-0"

8-27-19



Building owned and managed by
HEALTHCARE REALTY

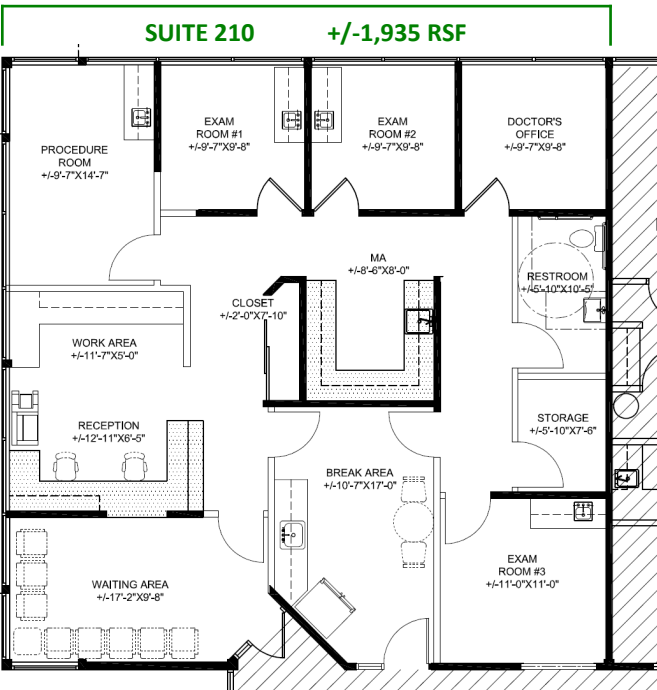
The information in this profile is provided by Owner. Arthur Berry & Company makes no representation as to its completeness and accuracy. Price and terms subject to change at Owner's discretion.



CONCEPTUAL MEDICAL CLINIC FLOOR PLANS

Open to Tenant-suggested modifications to Conceptual Plan.

Contact agent for Tenant Improvement Allowance for Conceptual Medical Use Space Plan



ARTHUR BERRY & COMPANY



250 W Bobwhite Ct Suite 230
 Boise, Idaho 83706

208-336-8000

www.arthurberry.com



Building owned and managed by
HEALTHCARE REALTY



 Saint Alphonus

 CURTIS BUSINESS PLAZA

PARKING AREA



**ARTHUR BERRY
& COMPANY**



250 W Bobwhite Ct Suite 230
Boise, Idaho 83706

208-336-8000

www.arthurberry.com



**HEALTHCARE
REALTY**

Building owned and managed by
HEALTHCARE REALTY